



2022 NFHS BASEBALL RULES POWERPOINT

National Federation of State
High School Associations



B. Elliot Hopkins, MLD, CAA
NFHS Director of Sports, Sanctioning and Student Services

NFHS CORPORATE PARTNER

Exclusive Baseball/Softball App of the NFHS



Features

- Scorekeeping, Stats & Pitch Counts
- Animated Live Game & Recap Story
- Live Video Streaming & Highlight Clipping
- Team Management Tools
- Team Communication

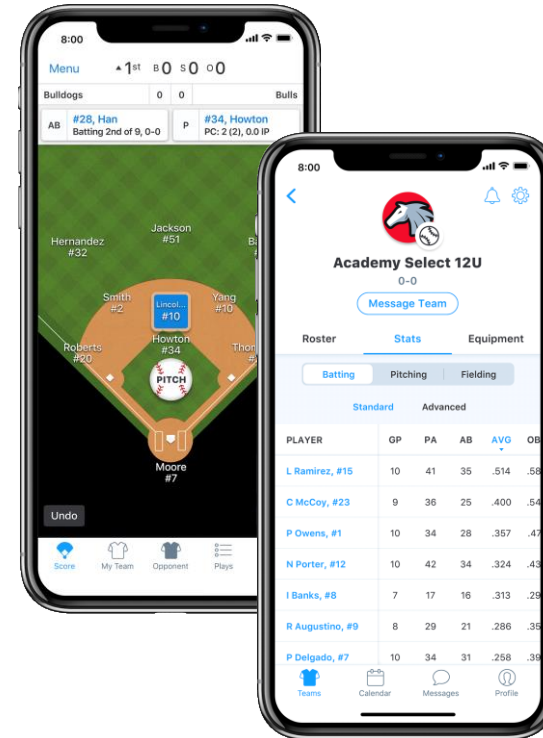
State Association Benefits

- Pitch Count Tracking & Reporting
- Consolidated Stat Tools
- State Tournament Stats

Stay Tuned! – Upcoming Webinar and Q&A Session

- What's New?
- Updates to League/Pitch Count Tools
- Hear from Current State Association Partners

Contact - Kyleigh Meisler | Kyleigh@gc.com



GAMECHANGER BY DICK'S SPORTING GOODS



IMPORTANT FACTS AND DATES

- *2018-19 Participation Results
 - Baseball (4) 482,740 [down from 2017-18 {487,097}]
 - Girls': 1,284 (down from 2017-18 1,762)
- In-person Interpretation Meeting Date
 - January 19-20, 2022
- Mid-Season Webinar Date
 - April 22, 2022
- Rule Change Proposal Submission Dates
 - Open Date: September 1, 2021
 - Close Date: May 1, 2022
- Rules Committee Date
 - June 5-7, 2022

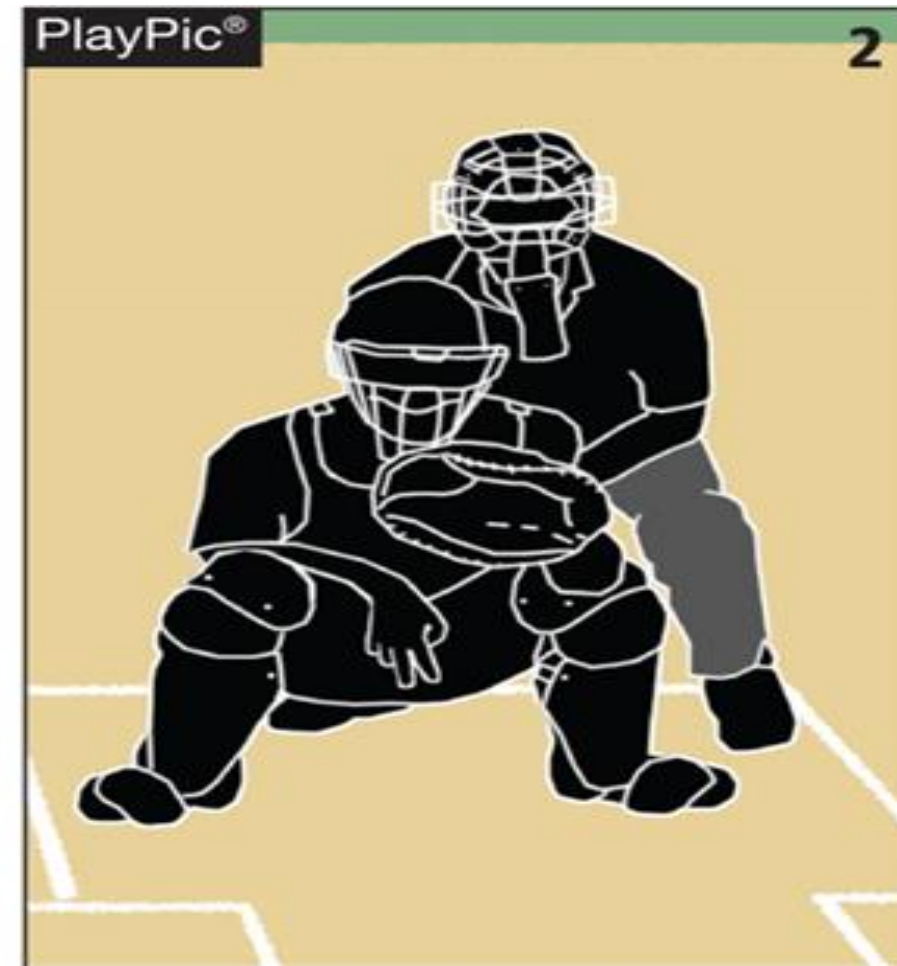
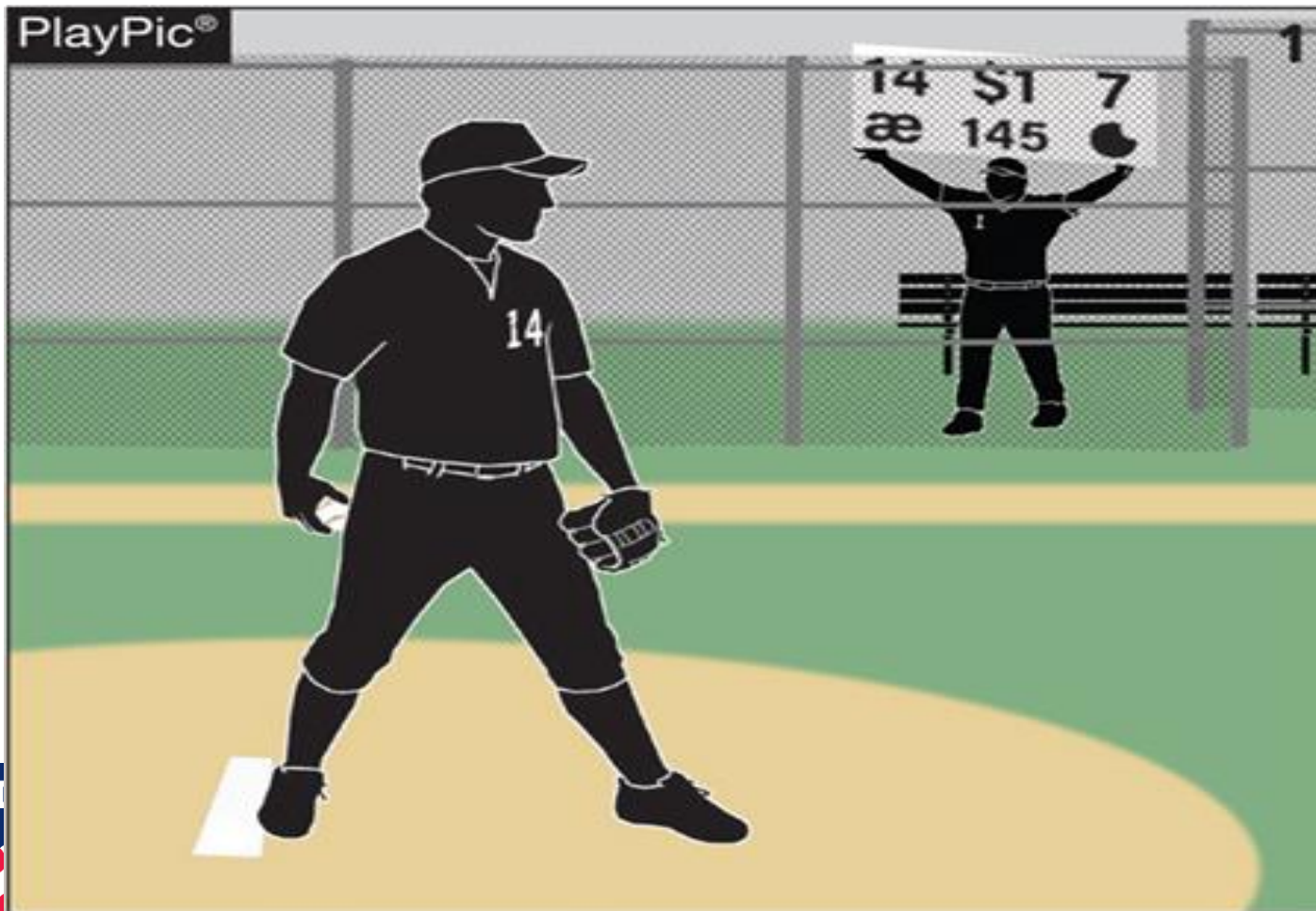




RULES CHANGES



RULE 6-1-1 PITCHING

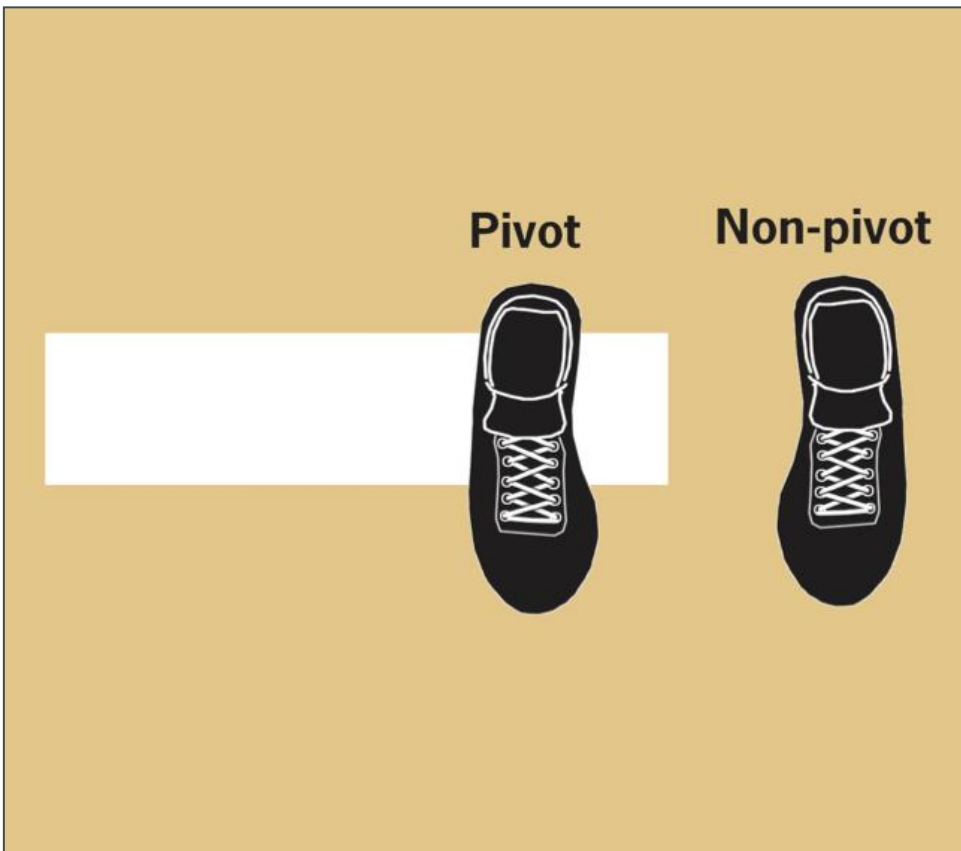




RULE 6-1-1

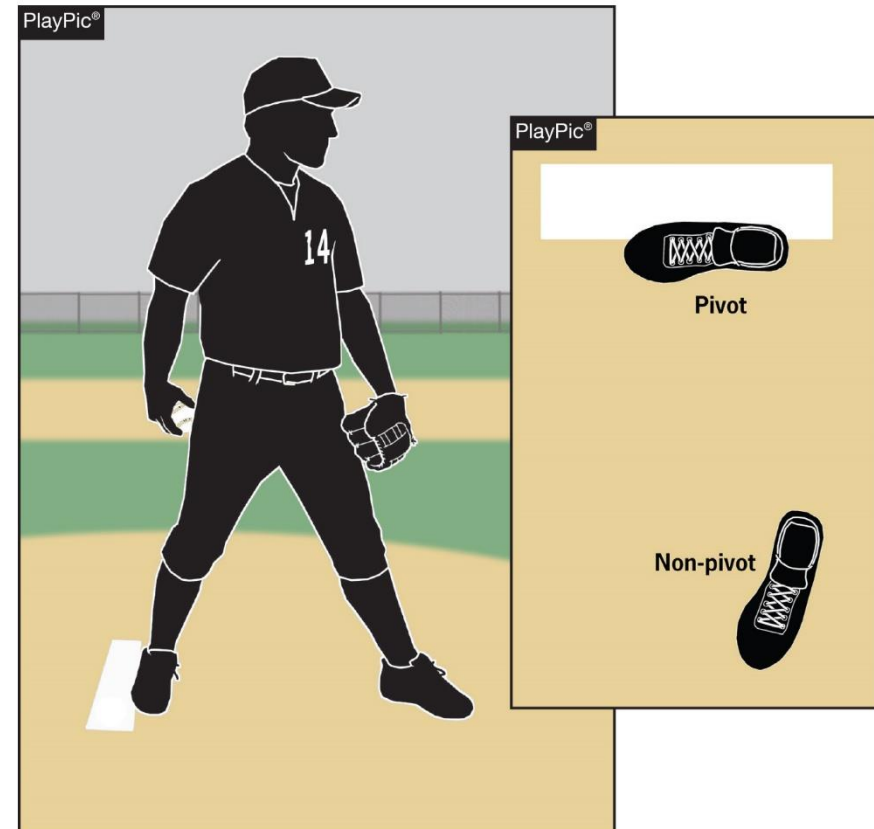
ART. 1 . . . The pitcher shall pitch while facing the batter from either a windup position (Art.2) or set position (Art.3). The position of his feet determine whether he will pitch from the windup or the set position. He shall take or simulate taking his sign from the catcher with his pivot foot in contact with the pitcher's plate. The pitching regulations begin when he intentionally contacts the pitcher's plate. Turning the shoulders after bringing the hands together during or after the stretch is a balk. He shall not make a quick-return pitch in an attempt to catch a batter off balance. The catcher shall have both feet in the catcher's box at the time of the pitch. If a pitcher is ambidextrous, the umpire shall require the pitcher to face a batter as either a left-handed or right-handed pitcher, but not both.

WINDUP POSITION



SET POSITION

For the set position, a pitcher shall stand with his entire non-pivot foot in front of a line extending through the front edge of the pitcher's plate and with his entire pivot foot in contact with or directly in front of and parallel to the pitcher's plate.





RULE 6-1-1

Rationale:

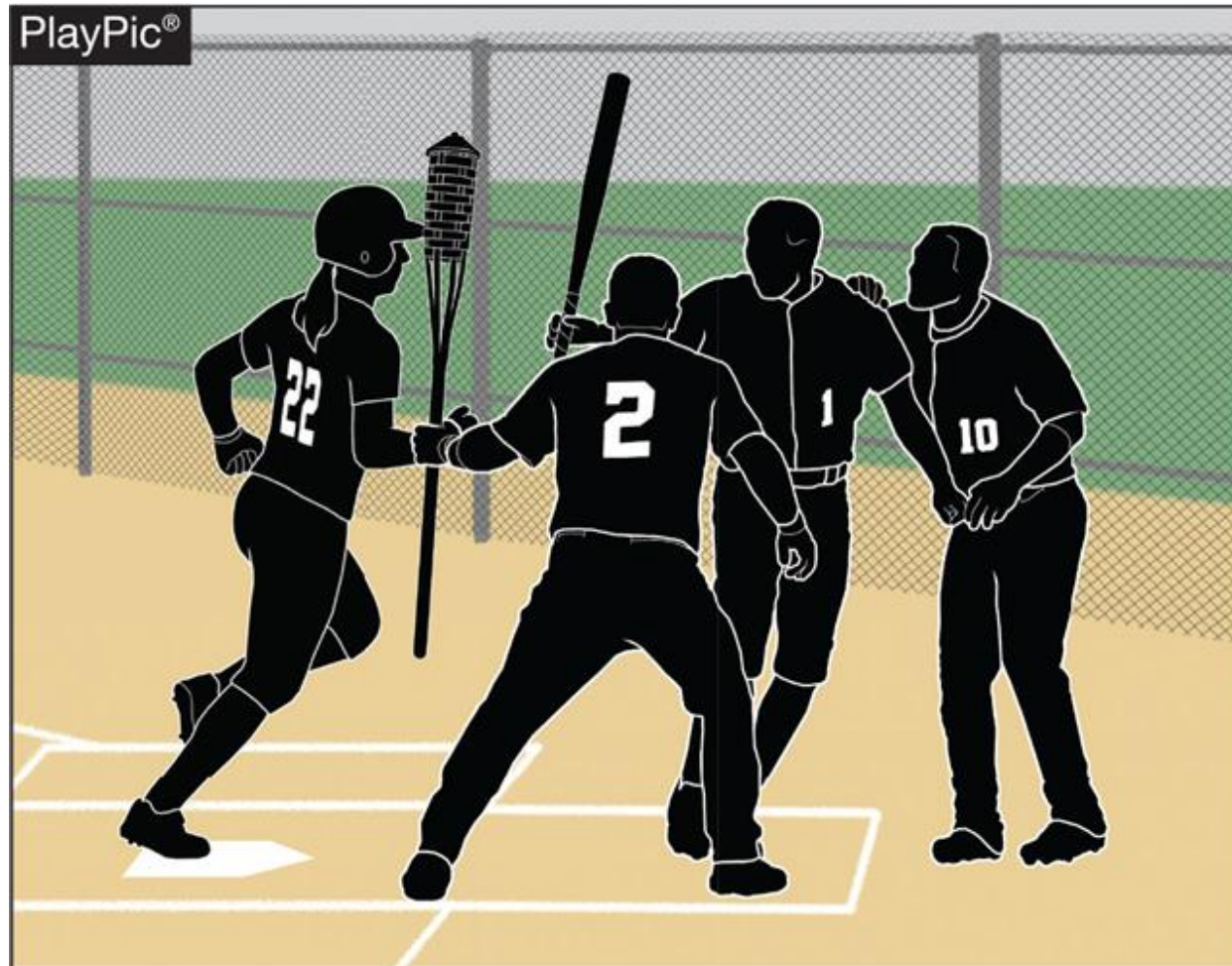
The pitcher acquiring the sign from the catcher is one of the fundamental rules of baseball. It not only signals the defensive team that action is about to be initiated, but it also establishes when an offensive base runner(s) can take a lead-off from his/her base. That simple act has evolved over the last decade but was not supported by an accompanying rule. This change validates the pitcher taking the sign from the dugout/bench via “call” signs, numbers, colors, or an arm wristband/placard that contains printed cards where the defensive set up/pitching repertoire is located. This aspect of the game has become more sophisticated to match the skill level and ability of today’s high school baseball player.



NFHS BASEBALL POINTS OF EMPHASIS



EXCESSIVE CELEBRATION

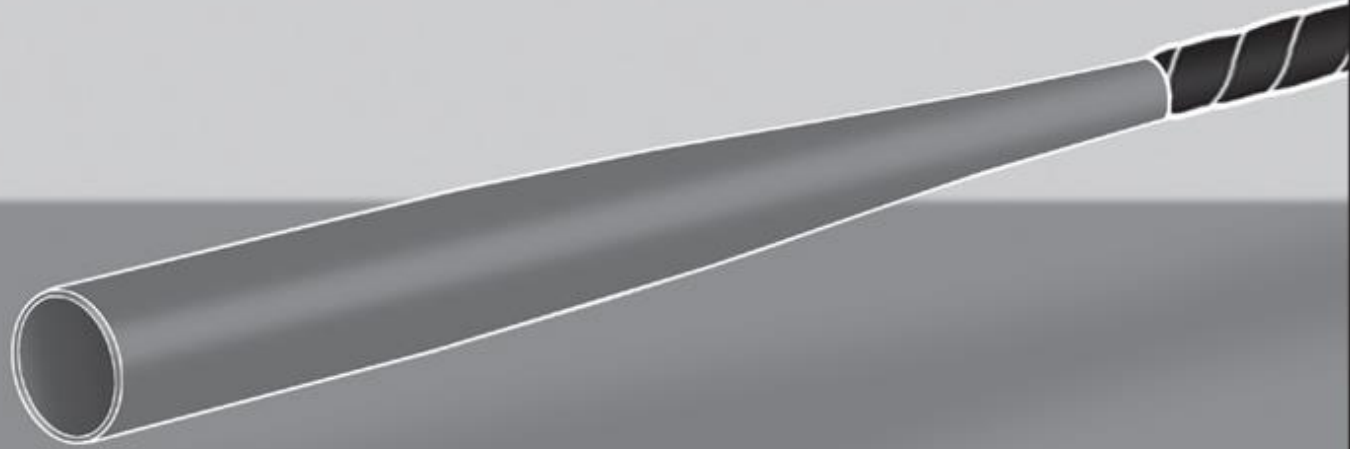


EXCESSIVE CELEBRATION

- The game has evolved from celebratory high-fives and cheers to choreographed celebrations that include props and players being assigned specific roles.
- If coaches are unable to manage the emotions of their players or the theatrics of celebration, then the game umpires have existing rules that provide warnings, possible restrictions and ultimately ejections from the contest.

PROPER USE OF EQUIPMENT

PlayPic®



PROPER USE OF EQUIPMENT

- Equipment manufacturers spend millions of dollars to ensure that their products are held to high industry standards. Most products are tested as to how they are supposed to be worn or used. When someone alters that product, it violates the equipment's warranty and leaves the end-user uncertain that the product will perform...or protect the wearer from injury or harm.
- Bats, helmets, chest and chin protectors should not be modified or used in a way that it was not designed by the manufacturer.
- Doing so violates the equipment's warrant and creates a product that may not perform as intended nor protect the user from injury or harm.

SITTING ON BUCKETS (COACHES)





SITTING ON BUCKETS (COACHES)

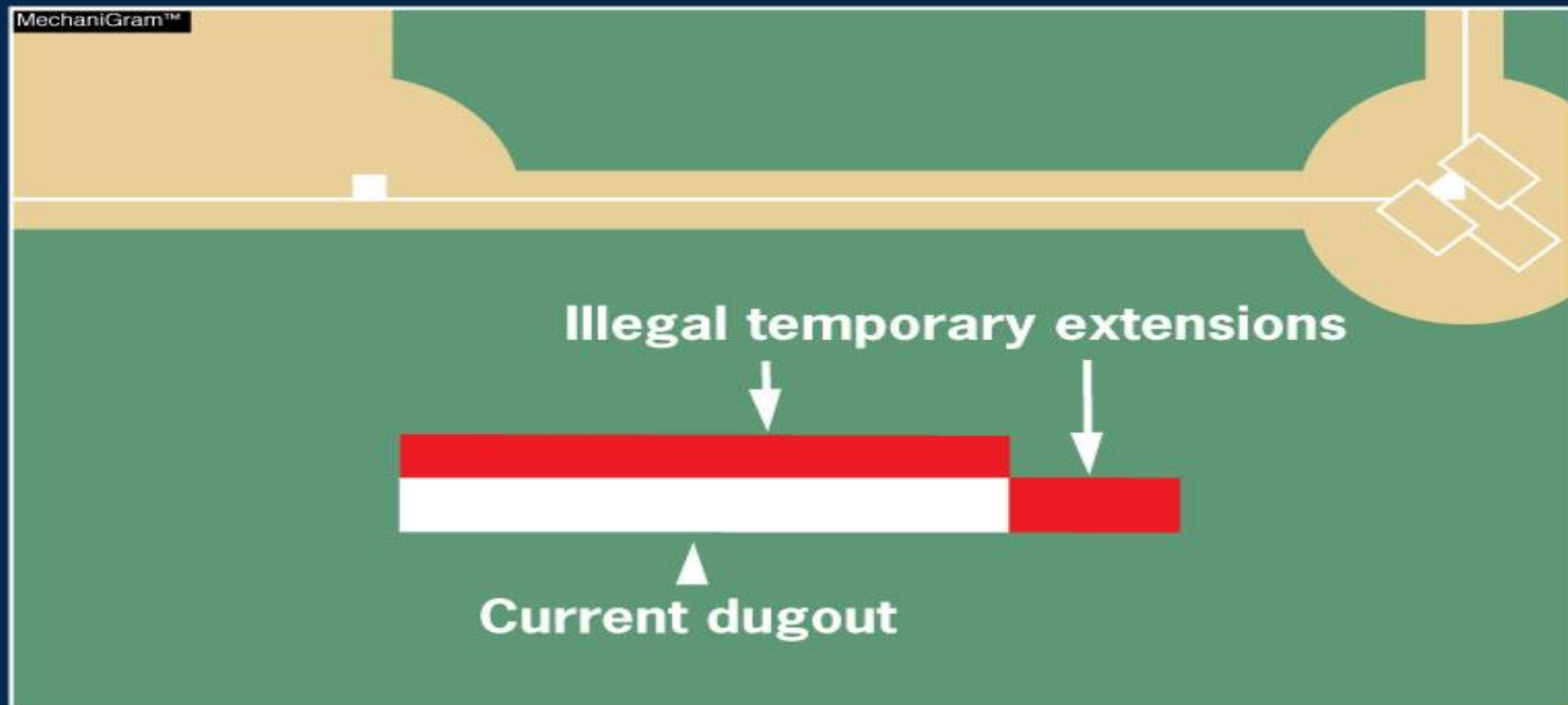
- Coaches, players, substitutes, attendants or other bench personnel shall not leave the dugout during live ball for any unauthorized purpose.
- Coaches or team personnel may not sit outside the dugout/bench on buckets or stools.
- We have an obligation to protect and set a good example for the students we coach and care about; not to entice them to break the rules. High school sports have always been about teaching skill and work ethic while modeling appropriate behavior. Staying in the dugout/bench area is another example of showing our students the “right” way to do things.





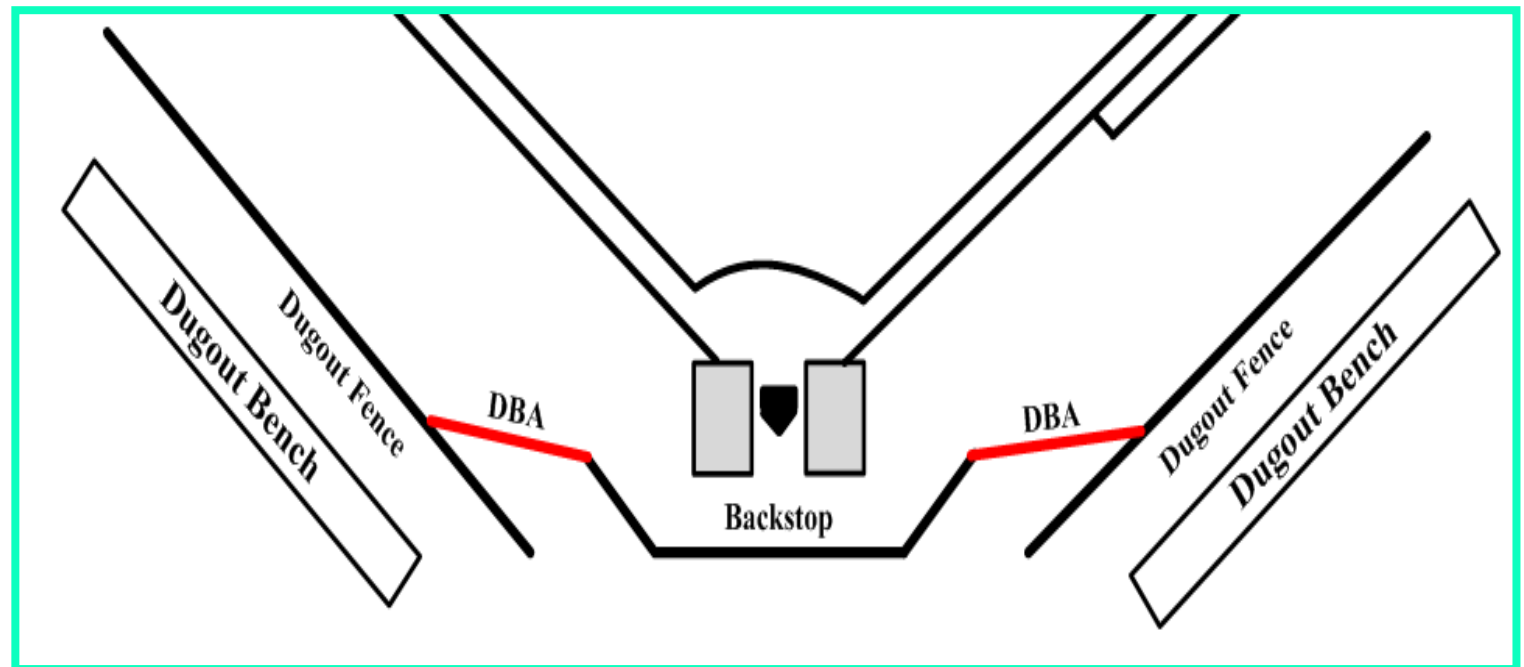
Dugout Extensions

Rule 1-2-4



NEW JERSEY

Schools can not extend or create a “Dead Ball Area” from the backstop/cage to the dugout fence in order to **create a coaches sitting area**.



NEW JERSEY

**NO standing
in the dugout
entrance by
players,
coaches or
team
attendants.**



LODGED BALL PROCEDURE



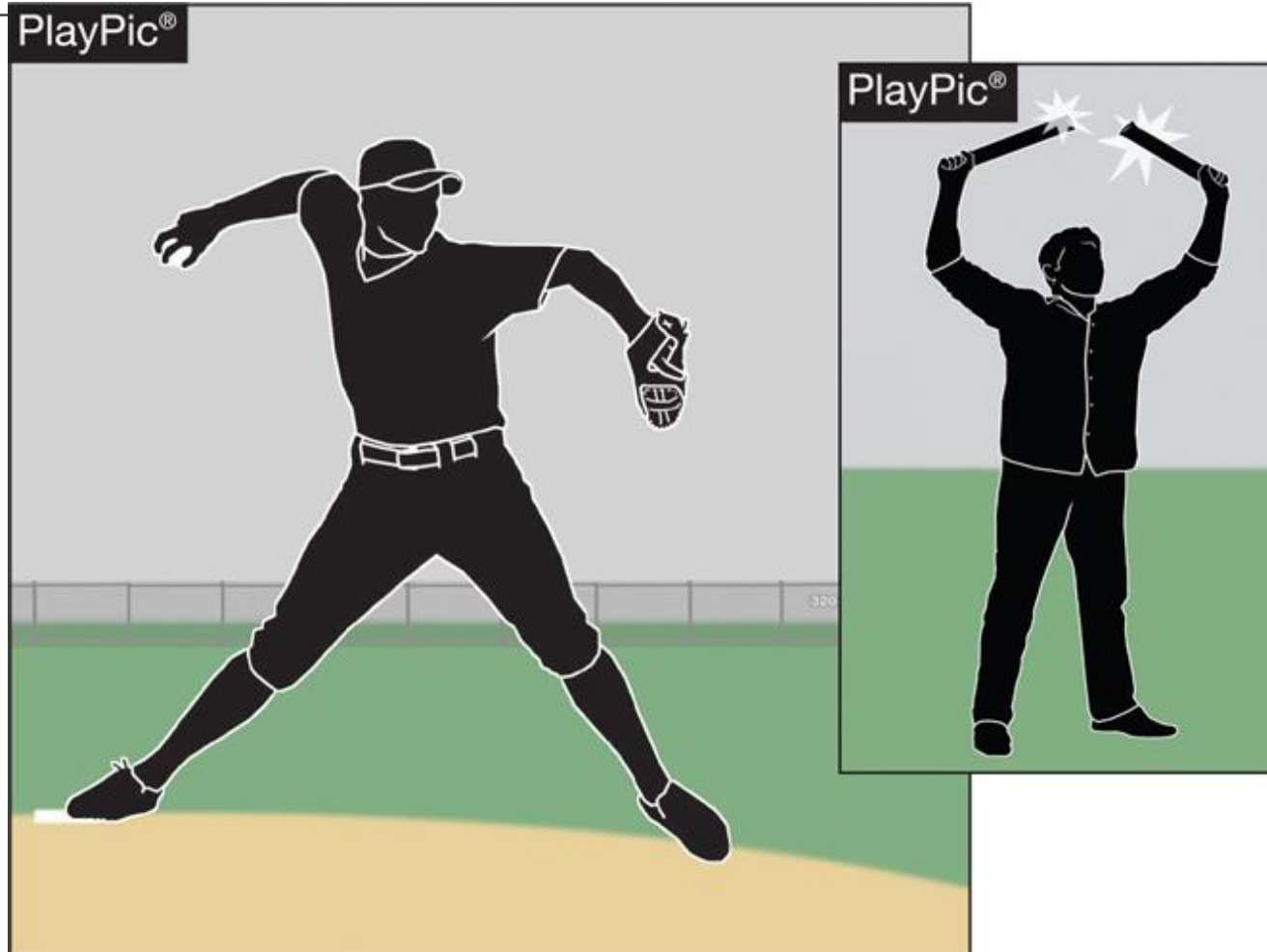


LODGED BALL PROCEDURE

- When a lodged ball situation occurs, there is always a lot of energy behind if the ball is truly lodged or is the defensive player practicing gamesmanship. We have seen at different levels that when a ball gets lodged in a glove the quick-thinking fielder removes his glove and throws it to the respective base to register the force out. While it is an exciting play that takes skill and a little bit of luck to accomplish, we do not have that many lodged balls in high school baseball.
 - A baseball that remains on the playing field but has become wedged, stuck, lost, unreachable, is defined to be a lodged ball.
- If the ball impacts something, stops abruptly, and does not fall or roll immediately, it is considered lodged.



SPORTSMANSHIP





SPORTSMANSHIP

- Chants/intentional distractions/loud noises (natural or artificial) directed at the opponent's pitcher prior to his pitching, the batter preparing to hit, or a fielder getting ready to make a play is not good sportsmanship and should not be accepted.
- Players are not allowed to stand or kneel outside their dugout/bench and make "cat-calls" or any other disparaging remarks to the other team. Rooting for your team is an integral part of high school baseball. Supporting your teammates is extremely important and encouraged, however, making disparaging remarks toward your opponent is not part of the game, in fact it detracts from the contest. The purpose of interscholastic sports is educational.





RULES REMINDERS

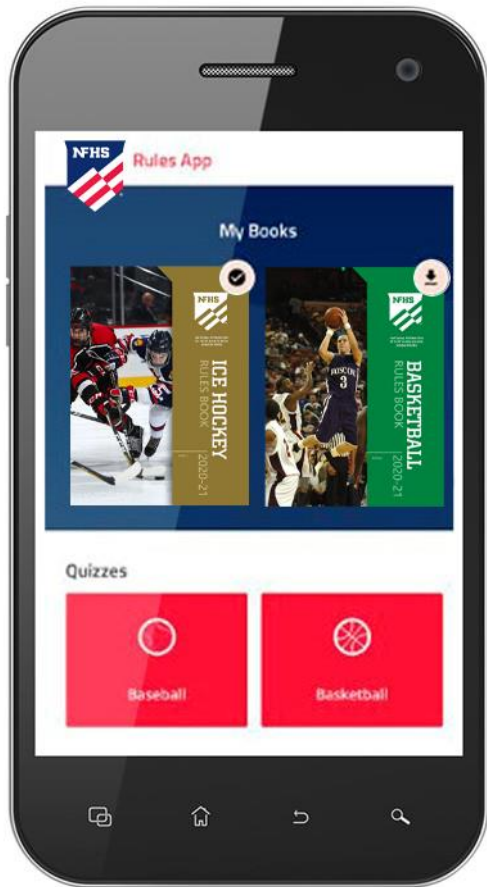


DESIGNATED HITTER RULE 3-1-4a2

14	4	Daniels		8
		SUB.		
32	5	Edwards		DH 3
		SUB.		
17	6	Franklin		6
		SUB.		
24	7	George		2
		SUB.		
2	8	Hamilton		9
		SUB.		
19	9	Irwin		5
		SUB.		
6	10	Jackson		1
		SUB.		
				3
NO.	SUBSTITUTES			
11	Knutson			POS.
28	Larson			
35	Matthewson			
1	Nelson			

- While there is no change from the previous DH rule.
- The role of a standard DH is still terminated for the remainder of the game when the designated hitter or any previous designated hitter assumes a defensive position.

NEW NFHS RULES APP



- Rules App features:
 - Searchable
 - Highlight notes
 - Bookmarks
 - Quizzes for all sports
 - Easy navigation
 - Immediate availability
 - Free to paid members of the NFHS Coaches and Officials Associations
 - www.nfhs.org/erules for more information





New Jersey Modifications





UMPIRE COMMUNICATIONS WITH PRESS AND SOCIAL MEDIA

- Umpires shall not talk to Media or post on Social Media comments on rulings.
- After officiating a high school baseball game, any questions from the media are to be referred to Tony Maselli, NJSIAA Chief Operating Officer.
- Game officials shall respond, “NO Comment”, when asked a question about a ruling or play.
- Officials shall refrain from commenting or offering a ruling on a play situation in a game that they were not involved in.
- The above also pertains to posting comments on social media sites as well.



ADULT COACHES HELMET POLICY

- Any adult coaching in the first or third base coach's box shall wear a helmet. The helmet may be:
 1. **Tradition hard shell with a visor and no ear flaps.**
 2. **Single ear flap.**
 3. **Double ear flap.**
- No plastic hat liners or inserts may be worn within a cloth hat to meet this requirement.
- All baseball officials are required to enforce this policy and shall not start ANY inning until ALL coaches on the field are in compliance with this NJSIAA safety policy
- The NJSIAA is highly recommending that all Middle Schools adopt this safety policy for coaches.





SUNGLASSES

2021 Survey

Players did not understand why they could not wear sunglasses on bill of cap.
Coaches disliked the policy.
Umpire enforcement was inconsistent.

No data supporting improper wearing creates a safety issue.

Faced with other programs, ie. Summer travel ball, allowing.

Umpires shall get involved when excessive glare off sunglasses place other players in jeopardy.

Base runners must wear properly when running bases.



EYE BLACK

High School coaches must not allow players to wear eye black in a manner that taunts or threatens opponents.

Smeared eye black all over the cheeks is not consistent with the sportsmanship aspect of high school sports.

Umpires are to involve themselves when eye black involves racial, sexual, religious and other offensive areas.

Only one **Straight Line** or **Strip** of Eye Black is permitted under each eye. If the strip has the maker's name displayed when applied, it is legal.





PRE GAME SPORTSMANSHIP STATEMENT

Officials will read the following statement before every NJSIAA event at all levels (No Paraphrasing) to ALL participants:

The NJSIAA requires officials to enforce all rules regarding unsportsmanlike conduct by coaches and players. There will be no tolerance for any negative behavior, such as taunting, trash-talking and verbal, written, or physical conduct related to race, gender, ethnicity, disability, sexual orientation, or religion. Such behavior will result in being ejected from this event. All participants must respect the game and respect their opponents.





PRE GAME SPORTSMANSHIP STATEMENT

Umpires shall read to Home Team as soon as they complete infield practice.

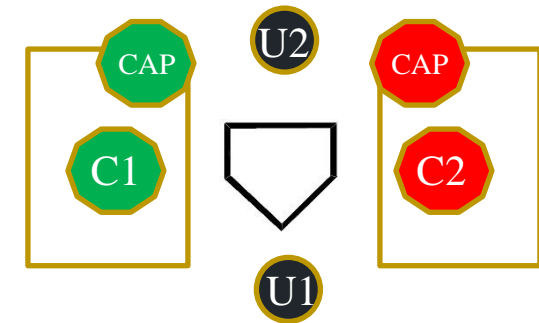
Umpires shall read to Visiting Team as soon as they complete infield practice.

Umpires shall request Visiting Team coach and captain to accompany them to home plate for exchange of lineup card and ground rules. At the same time, signal Home coach and captain to proceed toward home plate.



PRE-GAME SPORTSMANSHIP STATEMENT

- Both Head Coaches
- Both Team Captains



“Coaches, All players are properly equipped to play the game?”
“Both teams have been instructed in the elements of good sportsmanship and shall exhibit the same throughout the contest?”



NJSIAA BASEBALL TEST

Open Feb. 1 through March 15

110 Questions – NFHS Test plus 10 NJ modification and mechanics

Passing score is 80%

Unlimited number of attempts





OFFICIALS EDUCATION CONTENT IS NOW FREE



TEACHING AIDS

RULES
CHANGES

DIAGRAMS

VIDEO
LIBRARY

OFFICIALS
COURSES



THE PLACE FOR
**HIGH
SCHOOL
SPORTS**

NFHS
NETWORK



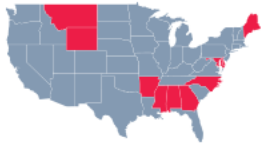
**LEARNING
CENTER**
NFHSLearn.com



CENTER FOR OFFICIALS SERVICES

Powered by:
DRAGONFLY

Year One Accomplishments



10
States
Registering
Officials



23,800
Contests
Assigned



\$2.2M
Payments
Sent to Officials

Future Developments



Distance Calculations



Ranking of Officials



Game Counts



Enhanced Blocking



Rules and Case Books



Exam Center

100% FREE to your state as a NFHS-Member Benefit.



NFHS OFFICIALS EDUCATION SPORT-SPECIFIC COURSES

▪ Courses Available

- Officiating Football
- Soccer – Fouls and Misconduct
- Swimming and Diving
- Officiating Wrestling
- Officiating Basketball
- Umpiring Softball
- Officiating Volleyball – Ball Handling

▪ Future Courses

- Officiating Baseball
- Basketball – Three-Person Mechanics
- Field Hockey
- Track and Field
- Volleyball – Overlapping
- Softball – Mechanics
- Communication Among Officials and Coaches
- Soccer - Offside





Welcome To The New NFHS Video Library!

Search For Your Sport Below

Video Filters

Sort By

Select Categories

Select Sports

Search our videos...



Total videos: 373



3-Man Mechanics - Runners At ...

Baseball



UIL Court Coverage - Trail Of...

Basketball



THE FOLLOWING PRESENTATION WAS SHOT AND PRODUCED BY THE NFHS
IN COOPERATION WITH BEN DAVIS HIGH SCHOOL (IND.) AND
BEEBEUR JESUIT PREPARATORY SCHOOL (IND.) IN 2014.
WE THANK THEM FOR THEIR PARTICIPATION AND SUPPORT.

Final Run Out Before Start

Cross Country



Football Mechanics: Coin Toss...

Football



Ice Hockey Rules Concepts - B...

Ice Hockey



NFHS Soccer Rules: Referee Me...

Soccer



**THANK YOU AND HAVE A GREAT
BASEBALL SEASON!**

